

CHERNE®

PRICE GUIDE

**TEST
WILL
BEST™**



Pneumatic Plugs

Single-Size Plumbing Test-Ball® Plugs3
 Multi-Size Plumbing Test-Ball® Plugs.....3
 Long Test-Ball® Plugs.....3
 MS2® Long Test-Ball® Plugs.....3
 Clean-Seal® Plugs.....3
 Single-Size Underground Test-Ball® Plugs.....4
 Multi-Size Underground Test-Ball® Plugs.....4
 I-Series® Test-Ball® Plugs.....4
 Pillow Style Test-Ball® Plugs.....4
 Remo® Remote Placement Plugs.....5
 Single-Size Muni-Ball® Plugs5
 Multi-Size Underground Muni-Ball® Plugs5
 Original Big Mouth® Plugs5
 Single-Size Big Mouth® Plugs5
 I-Series® Muni-Ball® Plugs.....6
 Air-Loc® Leak Locator Plugs.....6
 Multi-Size Big Mouth® Plugs7
 Multi-Size Big Mouth® Plugs with Interchangeable Flange.....7
 Multi-Size Big Mouth® Plug Flange Kits.....7
 Multi-Size High Pressure Plugs.....7
 Protective Sleeves7
 Pressure Relief Valves.....8

Mechanical Plugs

Mechanical Cleanout Plugs8
 End-of-Pipe Gripper® Plugs.....8
 Inside-of-Pipe Gripper® Plugs.....8
 Hub-Fit Gripper® Plugs.....8
 Clean-Out Gripper® Plugs8
 T-Handle Gripper® Plugs with Bypass.....9
 T-Handle Gripper® Plugs without Bypass9
 Iron Grip Plugs.....9
 Econ-O-Grip® Plugs.....9
 Petro Econ-O-Grip® Plugs.....9
 Sure-Grip® Plugs.....10
 Kwik 'N Sure® Plugs10
 Monitor Well Plugs10
 Test-Kap10

Aluminum Deflection Gauges

SDR 35 Fin Sets and Kits11
 PS 46 Fin Sets.....11
 SDR 26 Fin Sets and Kits.....12
 PS 115 Fin Sets12
 Custom Fins and Parts12

Fixed Steel Deflection Gauges

SDR 35 Deflection Gauges.....13
 SDR 26 Deflection Gauges13
 PS 46 Deflection Gauges.....13
 PS 115 Deflection Gauges.....14
 Custom Fixed Steel Gauges.....14
 Proving Rings for All Deflection Gauges.....14
 Custom Proving Rings14

Testing Equipment

Line Acceptance and Leak Location Products.....15
 Conversion Kits for Air Testing (3/8" & 3/4" Hoses).....15
 Conversion Kits for Air Testing (3/8" Hoses).....15
 Parts/Fittings.....16
 Manhole Jacks • Rollers • Winch
 Manhole Cover Hooks16
 Air-Loc® Plate Style Manhole Tester.....16
 Air-Loc® Bladder Style Manhole Tester16
 Air-Loc® Vacuum Pump.....17
 Air-Loc® Vacuum Generators.....17
 Line Stringer/Ventilators17
 Smoke Blower18
 Plumbing Smoke Blower18
 Air-Loc® Joint Testers.....18
 End Elements19
 Air-Loc® Joint Tester Replacement Parts.....19
 Multi-Size Point Repair Carrier.....20
 Jet-Ball™20
 Aqua-Loc® Hydrostatic Test Pump –
 Diaphragm Style, 9.5 gpm21
 Aqua-Loc® Hydrostatic Test Pump –
 Diaphragm Style, 35 gpm21
 Test Pumps.....21
 Clog-Busters22
 Manometer22

Hose Assemblies & Accessories

Waste and Overflow Plugs22
 Replacement Chains.....22
 Gauges with 1/4" Connection.....22
 Gauges with 3/4" FNPT Test Body.....23
 Extension Hose with Gauge, 3/16" ID.....23
 Extension Hose - 3/16" ID23
 Poly Lift Line - 3/16" ID.....23
 Hi-Flow Poly Lift Line with Gauge - 3/8" ID24

PNEUMATIC PLUGS

Single-Size Plumbing Test-Ball® Plugs



Part Number	Description	Usage Range	Maximum Backpressure	Case Quantity	List Price Each
270008	3/4" – 1-1/4"	0.75" – 1.30"	17 psi 40 ft.	6	\$74.55
270016	1-1/4" – 1-1/2"	1.17" – 1.75"	13 psi 30 ft.	6	\$50.86
240018	1-1/4" – 1-1/2"	1.17" – 1.75"	13 psi 30 ft.	24	\$43.90
270024	2"	1.9" – 2.25"	13 psi 30 ft.	6	\$54.17
240028	2"	1.9" – 2.25"	13 psi 30 ft.	24	\$48.70
270108	2-1/2"	2.34" – 2.75"	13 psi 30 ft.	6	\$61.79
270032	3"	2.77" – 3.25"	13 psi 30 ft.	6	\$58.48
240038	3"	2.77" – 3.25"	13 psi 30 ft.	24	\$52.68
270040	4"	3.41" – 4.25"	13 psi 30 ft.	6	\$67.92
240048	4"	3.41" – 4.25"	13 psi 30 ft.	24	\$60.96
270059	5"	4.6" – 5.25"	13 psi 30 ft.	1	\$128.88
270067	6"	5.44" – 6.25"	13 psi 30 ft.	1	\$169.47
066257	Valve Cap, Screwdriver Type			1	\$1.66

Multi-Size Plumbing Test-Ball® Plugs



Part Number	Description	Usage Range	Maximum Backpressure	Case Quantity	List Price Each
276128	1-1/4" – 2"	1.25" – 2.10"	17 psi 40 ft.	6	\$60.96
276238	2" – 3"	1.9" – 3.1"	17 psi 40 ft.	6	\$65.60
276348	3" – 4"	2.8" – 4.25"	17 psi 40 ft.	6	\$80.68
276468	4" – 6"	3.4" – 6.25"	17 psi 40 ft.	1	\$186.53

Long Test-Ball® Plugs



Part Number	Description	Usage Range	Maximum Backpressure	Case Quantity	List Price Each
271020	2"	1.75" – 2.25"	13 psi 30 ft.	1	\$115.46
271039	3"	2.75" – 3.25"	13 psi 30 ft.	1	\$131.04
271047	4"	3.50" – 4.25"	13 psi 30 ft.	1	\$155.39
271063	6"	5.50" – 6.25"	13 psi 30 ft.	1	\$332.98
271098	4" – 6"	3.25" – 6.25"	13 psi 30 ft.	1	\$353.02

MS2® Long Test-Ball® Plugs



Part Number	Description	Usage Range	Maximum Backpressure	Case Quantity	List Price Each
274518	2" – 3"	1.75" – 3.25"	13 psi 30 ft.	1	\$211.71
274526	3" – 4"	2.75" – 4.25"	13 psi 30 ft.	1	\$269.69
274534	4" – 6"	3.50" – 6.25"	13 psi 30 ft.	1	\$418.12

Clean-Seal® Plugs



Part Number	Description	Maximum Backpressure	Case Quantity	List Price Each
271508	1-1/2"	13 psi 30 ft.	6	\$54.67
271705	2"	13 psi 30 ft.	6	\$59.80
271713	3"	13 psi 30 ft.	6	\$64.77
271721	4"	13 psi 30 ft.	6	\$75.04
271758	6"	13 psi 30 ft.	1	\$188.19



PNEUMATIC PLUGS

Single-Size Underground Test-Ball® Plugs



Part Number	Description	Usage Range	Maximum Backpressure	Case Quantity	List Price Each
041386	8"	7" – 8.25"	17 psi 40 ft.	1	\$268.37
041394	10"	9" – 10.25"	17 psi 40 ft.	1	\$435.68
041408	12"	10.5" – 12.25"	17 psi 40 ft.	1	\$548.33
041416	15" – 16"	14" – 16"	13 psi 30 ft.	1	\$800.13

Multi-Size Underground Test-Ball® Plugs



Part Number	Description	Usage Range	Maximum Backpressure	Case Quantity	List Price Each
275048	4" – 6"	3.75" – 6.25"	17 psi 40 ft.	1	\$204.75
275058	6" – 8"	5.25" – 8.25"	17 psi 40 ft.	1	\$326.35
275088	8" – 12"	7" – 12.25"	11 psi 25 ft.	1	\$765.34

I-Series® Test-Ball® Plugs*



Part Number	Description	Usage Range	Maximum Backpressure	Case Quantity	List Price Each
310088	4" – 8"	3.95" – 8.25"	15 psi 34.6 ft.	1	\$548.33
210088	6" – 10"	5.5" – 10.25"	15 psi 34.6 ft.	1	\$816.70
310128	6" – 12"	5.5" – 12.25"	15 psi 34.6 ft.	1	\$826.64
210128	8" – 12"	7.5" – 12.25"	15 psi 34.6 ft.	1	\$939.29
310168	8" – 16"	7.5" – 16.25"	15 psi 34.6 ft.	1	\$1,008.86
210188	12" – 18"	10.75" – 18.25"	15 psi 34.6 ft.	1	\$1,548.91
610188	12"–18" with Sleeve	10.75" – 18.25"	15 psi 34.6 ft.	1	\$2,330.82
310248	12" – 24"	11" – 24.25"	15 psi 34.6 ft.	1	\$1,583.70
694248	12" – 24" with Sleeve	11" – 24.25"	15 psi 34.6 ft.	1	\$2,592.56
310338	15" – 32"	15" – 32"	12.2 psi 28 ft.	1	\$3,578.23
610338	15" – 32" with Sleeve	15" – 32"	12.2 psi 28 ft.	1	\$4,870.37
310428	20" – 40"	20" – 40"	10 psi 23 ft.	1	\$4,340.26
610428	20" – 40" with Sleeve	20" – 40"	10 psi 23 ft.	1	\$6,205.58
310448	24" – 48"	20.5" – 50"	10 psi 23 ft.	1	\$6,109.50
610448	24" – 48" with Sleeve	20.5" – 50"	10 psi 23 ft.	1	\$8,271.34
310600	24" – 60"	20.5" – 60.5"	6 psi 14 ft.	1	\$12,093.09
610608	24" – 60" with Sleeve	20.5" – 60.5"	6 psi 14 ft.	1	\$15,257.18
310728	48" – 72"	44" – 72.25"	6 psi 14 ft.	1	\$16,317.39
610728	48" – 72" with Sleeve	44" – 72.25"	6 psi 14 ft.	1	\$21,204.33
310968	54" – 96"	54" – 96.25"	6 psi 14 ft.	1	\$22,529.60
610968	54" – 96" with Sleeve	54" – 96.25"	6 psi 14 ft.	1	\$29,487.27
041878	Plastic Caps for QD fittings			10	Call for price
103586	Safety Manual			1	No Charge
028058	Safety Tags			1	No Charge

Pillow Style Test-Ball® Plugs



Part Number	Description	Usage Range	Maximum Backpressure	Case Quantity	List Price Each
277108	15"	14.7" – 15.5"	15 psi 35 ft.	1	\$2,087.30
277118	18"	17.8" – 18.8"	15 psi 35 ft.	1	\$2,140.31
277128	20"	19.6" – 20.7"	13 psi 30 ft.	1	\$2,469.97
277134	21"	20.6" – 21.8"	13 psi 30 ft.	1	\$2,488.20
277142	24"	23.5" – 25.2"	11 psi 25 ft.	1	\$2,766.50
277150	27"	26.5" – 28.2"	11 psi 25 ft.	1	\$3,000.08
277169	30"	29.4" – 31.25"	11 psi 25 ft.	1	\$3,478.84
277177	33"	32.3" – 34.25"	8.7 psi 20 ft.	1	\$4,043.73
277185	36"	35.3" – 37.5"	8.7 psi 20 ft.	1	\$4,592.06
277193	42"	41.2" – 43.7"	7.8 psi 18 ft.	1	\$5,201.69
277207	48"	47.04" – 50"	5.6 psi 13 ft.	1	\$5,844.44
277215	54"	52.92" – 56"	5.6 psi 13 ft.	1	\$6,722.43
277223	60"	58.8" – 62"	5.6 psi 13 ft.	1	\$7,862.17
277231	66"	64.7" – 68"	3.5 psi 8 ft.	1	\$8,912.44
008948	12" – 24" Pillow Plug Patch Kit			1	\$173.94
277258	72" Pillow Plug			1	Call for price

*15"-32" to 54"-96" Diameter Plugs have Rupture Disc or Pressure Relieve Valve



PNEUMATIC PLUGS

Remo® Remote Placement Plugs



Part Number	Description	Usage Range	Maximum Backpressure	Case Quantity	List Price Each
319128	6" – 12"	5.5" – 12.25"	15 psi 34.6 ft.	1	\$695.77
219128	8" – 12"	7.0" – 12.25"	15 psi 34.6 ft.	1	\$939.29
219188	12" – 18"	10.5" – 18.25"	15 psi 34.6 ft.	1	\$1,712.91
Accessories					
019473	6' Remo® Pole			1	\$80.01
019458	Remo® Pole Adapter (1-1/4" MNPT)			1	\$104.36
019558	1-1/2" Remo® Muni-Ball® Adapter			1	\$261.74
019568	2" Remo® Muni-Ball® Adapter			1	\$273.34
019548	2" – 1-1/2" Reducer Bushing			1	\$43.57
060508	3" – 2" Reducer Bushing			1	\$62.62
059688	4" – 2" Reducer Bushing			1	\$69.58

Single-Size Muni-Ball® Plugs



Part Number	Description	Usage Range	Maximum Backpressure	Case Quantity	List Price Each
262008	1-1/2", with 1/4" MNPT Bypass	1.49" – 1.88"	22 psi 50 ft.	1	\$202.27
262158	1-1/2", with 1/4" FNPT Bypass	1.49" – 1.88"	22 psi 50 ft.	1	\$202.27
262010	2", with 1/8" FNPT Bypass	1.88" – 2.25"	22 psi 50 ft.	1	\$217.84
262038	2-1/2", with 1/8" FNPT Bypass	2.49" – 2.88"	22 psi 50 ft.	1	\$232.09
262258	3", with 1/2" FNPT Bypass	2.62" – 3.25"	22 psi 50 ft.	1	\$235.40
262048	4", with 3/4" FNPT Bypass	3.25" – 4.25"	22 psi 50 ft.	1	\$235.40
262064	6", with 1-1/2" FNPT Bypass	4.50" – 6.25"	13 psi 30 ft.	1	\$277.65
262080	8", with 3" FNPT Bypass	7.00" – 8.25"	13 psi 30 ft.	1	\$356.17
262110	10", with 3" FNPT Bypass	9.00" – 10.25"	13 psi 30 ft.	1	\$470.47
262129	12", with 3" FNPT Bypass	10.50" – 12.25"	13 psi 30 ft.	1	\$660.98
262137	15" – 16", with 3" FNPT Bypass	14.0" – 16.0"	13 psi 30 ft.	1	\$1,043.65

Multi-Size Underground Muni-Ball® Plugs



Part Number	Description	Usage Range	Maximum Backpressure	Case Quantity	List Price Each
265048	4" – 6", with 3/4" FNPT Bypass	3.75" – 6.25"	17 psi 40 ft.	1	\$309.29
265068	6" – 8", with 1-1/2" FNPT Bypass	5.50" – 8.25"	17 psi 40 ft.	1	\$452.25
265078	8" – 10", with 2" FNPT Bypass	7.00" – 10.25"	17 psi 40 ft.	1	\$594.72

Original Big Mouth® Plugs



Part Number	Description	Usage Range	Maximum Backpressure	Case Quantity	List Price Each
269008	8" – 10", with 4" MNPT Bypass	7.25" – 10.25"	11 psi 25 ft.	1	\$548.33
269018	10" – 12", with 6" MNPT Bypass	9.25" – 12.25"	11 psi 25 ft.	1	\$834.92
269028	12" – 15", with 6" MNPT Bypass	10.62" – 15.25"	11 psi 25 ft.	1	\$1,148.02

Single-Size Big Mouth® Plugs

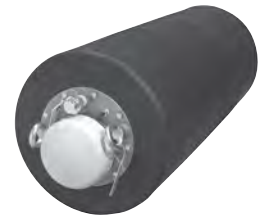


Part Number	Description	Usage Range	Maximum Backpressure	Case Quantity	List Price Each
369068	6", with 4" MNPT Bypass	5.69" – 6.34"	11 psi 25 ft.	1	\$757.06
369088	8", with 6" MNPT Bypass	7.75" – 8.45"	11 psi 25 ft.	1	\$974.07
369108	10", with 8" OD Bypass	9.75" – 10.46"	11 psi 25 ft.	1	\$1,217.59
369128	12", with 10" OD Bypass	11.75" – 12.52"	11 psi 25 ft.	1	\$1,444.55
369158	15", with 12" OD Bypass	13.9" – 15.56"	11 psi 25 ft.	1	\$1,739.42
369188	18", with 15" OD Bypass	16.88" – 18.74"	11 psi 25 ft.	1	\$2,026.01
369218	21", with 18" OD Bypass	20.01" – 21.81"	11 psi 25 ft.	1	\$2,357.32
369248	24", with 20" OD Bypass	22.63" – 24.98"	11 psi 25 ft.	1	\$2,696.93



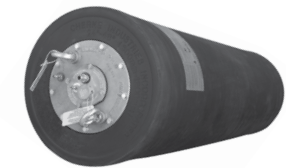
PNEUMATIC PLUGS

I-Series® Muni-Ball® Plugs*



Part Number	Description	Usage Range	Maximum Backpressure	Case Quantity	List Price Each
311088	4" - 8", with 1/2" MNPT Bypass	3.75" - 8.25"	15 psi 34.6 ft.	1	\$846.52
311128	6" - 12", with 1" MNPT Bypass	5.50" - 12.25"	15 psi 34.6 ft.	1	\$927.69
212128	8" - 12", with 2" MNPT Bypass	7" - 12.25"	15 psi 34.6 ft.	1	\$1,017.15
312168	8" - 16", with 2" MNPT Bypass	7.5" - 16.25"	15 psi 34.6 ft.	1	\$1,323.61
214188	12" - 18", with 3" MNPT Bypass	10.75" - 18.25"	15 psi 34.6 ft.	1	\$2,009.44
613188	12" - 18", with 3" MNPT Bypass, with Sleeve	10.75" - 18.25"	15 psi 34.6 ft.	1	\$2,791.35
312228	12" - 24", with 2" MNPT Bypass	11" - 24.25"	15 psi 34.6 ft.	1	\$2,181.73
312248	12" - 24", with 3" MNPT Bypass	11" - 24.25"	15 psi 34.6 ft.	1	\$2,181.73
654248	12" - 24", with 3" MNPT Bypass, with Sleeve	11" - 24.25"	15 psi 34.6 ft.	1	\$3,195.56
312338	15" - 32", with 2" MNPT Bypass	15" - 32"	12.2 psi 28 ft.	1	\$4,224.30
612338	15" - 32", with 2" MNPT Bypass, with Sleeve	15" - 32"	12.2 psi 28 ft.	1	\$5,518.10
314338	15" - 32", with 4" MNPT Bypass	15" - 32"	12.2 psi 28 ft.	1	\$4,333.64
614338	15" - 32", with 4" MNPT Bypass, with Sleeve	15" - 32"	12.2 psi 28 ft.	1	\$5,625.77
316328	15" - 32", with 6" MNPT Bypass	15" - 32"	12.2 psi 28 ft.	1	\$4,696.43
616328	15" - 32", with 6" MNPT Bypass, with Sleeve	15" - 32"	12.2 psi 28 ft.	1	\$5,988.57
314428	20" - 40", with 4" MNPT Bypass	20" - 40"	10 psi 23 ft.	1	\$5,251.38
614428	20" - 40", with 4" MNPT Bypass, with Sleeve	20" - 40"	10 psi 23 ft.	1	\$7,118.36
316428	20" - 40", with 6" MNPT Bypass	20" - 40"	10 psi 23 ft.	1	\$5,448.52
616428	20" - 40", with 6" MNPT Bypass, with Sleeve	20" - 40"	10 psi 23 ft.	1	\$7,313.84
314448	24" - 48", with 4" MNPT Bypass	20.5" - 50"	10 psi 23 ft.	1	\$7,630.25
614448	24" - 48", with 4" MNPT Bypass, with Sleeve	20.5" - 50"	10 psi 23 ft.	1	\$9,790.44
316448	24" - 48", with 6" MNPT Bypass	20.5" - 50"	10 psi 23 ft.	1	\$7,953.28
616448	24" - 48", with 6" MNPT Bypass, with Sleeve	20.5" - 50"	10 psi 23 ft.	1	\$10,121.75
314600	24" - 60", with 4" MNPT Bypass	20.5" - 60.5"	6 psi 14 ft.	1	\$14,014.74
614608	24" - 60", with 4" MNPT Bypass, with Sleeve	20.5" - 60.5"	6 psi 14 ft.	1	\$17,178.82
316600	24" - 60", with 6" MNPT Bypass	20.5" - 60.5"	6 psi 14 ft.	1	\$14,544.84
616608	24" - 60", with 6" MNPT Bypass, with Sleeve	20.5" - 60.5"	6 psi 14 ft.	1	\$17,725.49
314728	48" - 72", with 4" MNPT Bypass	44" - 72.25"	6 psi 14 ft.	1	\$17,394.18
614728	48" - 72", with 4" MNPT Bypass, with Sleeve	44" - 72.25"	6 psi 14 ft.	1	\$22,363.94
316728	48" - 72", with 6" MNPT Bypass	44" - 72.25"	6 psi 14 ft.	1	\$18,388.13
616728	48" - 72", with 6" MNPT Bypass, with Sleeve	44" - 72.25"	6 psi 14 ft.	1	\$23,357.89
318728	48" - 72", with 8" MNPT Bypass	44" - 72.25"	6 psi 14 ft.	1	\$18,885.11
618728	48" - 72", with 8" MNPT Bypass, with Sleeve	44" - 72.25"	6 psi 14 ft.	1	\$23,854.87
314968	54" - 96", with 4" MNPT Bypass	54" - 96.25"	6 psi 14 ft.	1	\$24,186.19
614968	54" - 96", with 4" MNPT Bypass, with Sleeve	54" - 96.25"	6 psi 14 ft.	1	\$31,143.86
316968	54" - 96", with 6" MNPT Bypass	54" - 96.25"	6 psi 14 ft.	1	\$24,517.50
616968	54" - 96", with 6" MNPT Bypass, with Sleeve	54" - 96.25"	6 psi 14 ft.	1	\$31,475.18
319968	54" - 96", with 8" Flange Bypass	54" - 96.25"	6 psi 14 ft.	1	\$25,014.48
619968	54" - 96", with 8" Flange Bypass, with Sleeve	54" - 96.25"	6 psi 14 ft.	1	\$31,972.15
041878	Plastic Caps for QD fittings			10	Call for price

Air-Loc® Leak Locator Plugs*



Part Number	Description	Usage Range	Maximum Backpressure	Case Quantity	List Price Each
Original Front Plugs					
267048	4" - 6"	3.75" - 6.25"	13 psi 30 ft.	1	\$533.42
217088	6" - 10"	5.50" - 10.25"	15 psi 34.6 ft.	1	\$939.29
317128	6" - 12"	5.50" - 12.25"	15 psi 34.6 ft.	1	\$952.54
217128	8" - 12"	7.00" - 12.25"	15 psi 34.6 ft.	1	\$1,051.93
217168	8" - 16"	7.5" - 16.25"	15 psi 34.6 ft.	1	\$1,494.24
217188	12" - 18"	10.75" - 18.25"	15 psi 34.6 ft.	1	\$1,817.28
617188	12" - 18", with Sleeve	10.75" - 18.25"	15 psi 34.6 ft.	1	\$2,600.84
217288	12" - 24"	11" - 24.25"	15 psi 34.6 ft.	1	\$2,095.58
617248	12" - 24", with Sleeve	11" - 24.25"	15 psi 34.6 ft.	1	\$2,948.73
I-Series® Front Plugs					
317338	15" - 32"	15.00" - 32.00"	12.2 psi 28 ft.	1	\$3,957.59
617338	15" - 32", with Sleeve	15.00" - 32.00"	12.2 psi 28 ft.	1	\$5,251.38
317428	20" - 40"	20.00" - 40.00"	10 psi 23 ft.	1	\$4,659.98
617428	20" - 40", with Sleeve	20.00" - 40.00"	10 psi 23 ft.	1	\$6,526.96
317448	24" - 48"	20.50" - 50.00"	10 psi 23 ft.	1	\$6,286.75
617448	24" - 48", with Sleeve	20.50" - 50.00"	10 psi 23 ft.	1	\$8,448.60
317600	24" - 60"	20.50" - 60.00"	6 psi 14 ft.	1	\$12,772.30
617608	24" - 60", with Sleeve	20.50" - 60.00"	6 psi 14 ft.	1	\$15,952.94
317728	48" - 72"	44.00" - 72.25"	6 psi 14 ft.	1	\$16,880.63
617728	48" - 72", with Sleeve	44.00" - 72.25"	6 psi 14 ft.	1	\$21,866.96
317968	54" - 96"	54.00" - 96.25"	6 psi 14 ft.	1	\$24,020.53
617968	54" - 96", with Sleeve	54.00" - 96.25"	6 psi 14 ft.	1	\$30,978.20
028708	Air-Loc® Shut Off Kit. Converts AL to TB.			1	Call for price

*15"-32" to 54"-96" Diameter Plugs have Pressure Relieve Valve

PNEUMATIC PLUGS

Multi-Size Big Mouth® Plugs



Part Number	Description	Usage Range	Maximum Backpressure	Case Quantity	List Price Each
374068	6" - 10", with 4" MNPT Bypass	5.75" - 10.25"	10 psi 23 ft.	1	\$1,051.93
374088	8" - 12", with 4" MNPT Bypass	7" - 12.25"	15 psi 34 ft.	1	\$1,330.24
376088	8" - 12", with 6" MNPT Bypass	7" - 12.25"	15 psi 34 ft.	1	\$1,444.55
376128	12" - 18", with 6" MNPT Bypass	11.25" - 18.25"	10 psi 23 ft.	1	\$2,721.77
378128	12" - 18", with 8" MNPT Bypass	11.25" - 18.25"	10 psi 23 ft.	1	\$3,130.95
036428	90° Elbow to Inflation Fitting			1	Call for price

Multi-Size Big Mouth® Plugs with Interchangeable Flange



Part Number	Description	Usage Range	Maximum Backpressure	Case Quantity	List Price Each
376148	14" - 21", with 6" MNPT Bypass	13.6" - 21.25"	10 psi 23 ft.	1	\$3,130.95
378148	14" - 21", with 8" MNPT Bypass	13.6" - 21.26"	10 psi 23 ft.	1	\$3,347.97
380148	14" - 21", with 10" MNPT Bypass	13.6" - 21.27"	10 psi 23 ft.	1	\$3,922.80
376188	18" - 24", with 6" MNPT Bypass	16.5" - 24.25"	10 psi 23 ft.	1	\$3,652.78
378188	18" - 24", with 8" MNPT Bypass	16.5" - 24.26"	10 psi 23 ft.	1	\$3,922.80
380188	18" - 24", with 10" MNPT Bypass	16.5" - 24.27"	10 psi 23 ft.	1	\$4,227.61

Multi-Size Big Mouth® Plug Flange Kits



Part Number	Description	Usage Range	Maximum Backpressure	Case Quantity	List Price Each
049068	6" Bypass for 14" - 21"			1	\$783.57
049088	8" Bypass for 14" - 21"			1	\$1,051.93
049168	6" Bypass for 18" - 24"			1	\$1,017.15
049188	8" Bypass for 18" - 24"			1	\$1,278.89
049208	10" Bypass for 18" - 24"			1	\$1,548.91

Multi-Size High Pressure Plugs



Part Number	Description	Usage Range	Maximum Backpressure	Case Quantity	List Price Each
511088	4" - 8"	3.8" - 8.2"	150 psi	1	\$2,957.01
511128	8" - 12"	7.7" - 12.2"	150 psi	1	\$3,652.78
512168	12" - 16"	11.9" - 16.2"	150 psi	1	\$5,044.31
512208	16" - 20"	15.2" - 20.2"	150 psi	1	\$6,087.96
512268	20" - 26"	19.2" - 26.2"	150 psi	1	\$7,827.38
512328	26" - 32"	25.8" - 32.2"	150 psi	1	\$9,575.08
276008	Inflation Hose, High Pressure Plug, 30', 1/4" QD			1	\$384.00
276018	Inflation Hose, High Pressure Plug, 30', 1/2" QD			1	\$962.31
276028	Read Back Hose, High Pressure Plug, 30', 1/4" QD			1	\$511.89
278198	Hydrostatic Test Pump, Electric			1	\$2,508.24
278188	Hydrostatic Test Pump, Manual			1	\$886.93
064348	Replacement 0 - 300 psi 2.5" Dial Test Pressure Gauge, with Retarded Increments to 600 psi			1	\$112.81

Protective Sleeves



Part Number	Description	Case Quantity	List Price Each
300968	12" - 18" (300 - 450 mm)	1	\$783.57
300988	12" - 24" (300 - 600 mm) for plugs made before May 2018	1	\$861.43
300978	12" - 24" (300 - 600 mm)	1	\$861.43
300998	15" - 30" (380 - 750 mm) and 15" - 32" (380 - 800 mm) for plugs made before Oct 2021	1	\$1,253.71
300338	15" - 32" (380 - 800 mm)	1	\$1,253.71
301408	20" - 40" (500 - 1000 mm) for plugs made before Dec 2019	1	\$1,712.91
301418	20" - 40" (500 - 1000 mm) for plugs made before Oct 2021	1	\$1,712.91
300428	20" - 40" (500 - 1000 mm)	1	\$1,712.91
301028	24" - 48" (600 - 1200 mm) for plugs made before Oct 2021	1	\$2,009.44
300448	24" - 48" (600 - 1200 mm)	1	\$2,009.44
301059	24" - 60" (600 - 1500 mm)	1	\$2,887.43
301048	48" - 72" (1200 - 1800 mm)	1	\$4,661.64
301068	54" - 96" (1400 - 2400 mm)	1	\$6,671.08



PNEUMATIC PLUGS

Pressure Relief Valves



Part Number	Description	Case Quantity	List Price Each
240078	Pressure Relief Valve for Plugs with Inflation Pressure up to 12 psi	1	\$1,197.71
240088	Pressure Relief Valve for Plugs with Inflation Pressure up to 25 psi	1	\$770.31
240108	Replacement Kit to Change from Rupture Disc to Pressure Relief Valve on I-Series Test-Ball®	1	\$982.36

* If Pressure Relief Valve is desired on 15"- 32" and larger diameter Air-Loc® plugs made before 4/1/2019, the plug will need to be converted from Rupture Disc to Pressure Relief Valve at the plant. Contact customer service for more information.

* Muni-Ball® plugs with 6" bypass will need to be converted from Rupture Disc to Pressure Relief Valve at the plant. Contact customer service for more information.

MECHANICAL PLUGS

Mechanical Cleanout Plugs



Part Number	Description	Maximum Backpressure	Case Quantity	List Price Each
271128	2" Mechanical Cleanout Plug	65 psi 150 ft.	1	\$53.41
271038	3" Mechanical Cleanout Plug	65 psi 150 ft.	1	\$58.42
271048	4" Mechanical Cleanout Plug	44 psi 100 ft.	1	\$76.78
271058	4" Mechanical Cleanout Plug with Fill/Drain	44 psi 100 ft.	1	\$100.14
270308	2" Mechanical Cleanout Plug Replacement Pad Kit		1	\$16.69
270318	3" Mechanical Cleanout Plug Replacement Pad Kit		1	\$20.03
270328	4" Mechanical Cleanout Plug Replacement Pad Kit		1	\$26.70
270338	4" Mechanical Cleanout Plug with Fill/Drain Replacement Pad Kit		1	\$26.70
271148	Shut off Valve, Mechanical Cleanout Plug		1	\$33.38

End-of-Pipe Gripper® Plugs



Part Number	Description	Usage Range	Maximum Backpressure	Case Quantity	List Price Each
270210	1-1/2"	1.48" – 1.65"	17 psi 40 ft.	10	\$9.28
270229	2"	1.90" – 2.17"	17 psi 40 ft.	10	\$10.68
270237	3"	2.80" – 3.10"	17 psi 40 ft.	10	\$14.41
270245	4"	3.80" – 4.06"	17 psi 40 ft.	10	\$17.62
270261	6"	5.77" – 6.08"	17 psi 40 ft.	5	\$47.81
270270	8"	7.70" – 8.03"	17 psi 40 ft.	1	\$90.96

Inside-of-Pipe Gripper® Plugs



Part Number	Description	Usage Range	Maximum Backpressure	Case Quantity	List Price Each
270296	4"	3.80" – 4.06"	17 psi 40 ft.	10	\$17.67
270253	6"	5.77" – 6.08"	17 psi 40 ft.	5	\$47.81
270288	8"	7.70" – 8.03"	17 psi 40 ft.	1	\$90.96

Hub-Fit Gripper® Plugs



Part Number	Description	Usage Range	Maximum Backpressure	Case Quantity	List Price Each
270528	2"	2.25" – 2.45"	13 psi 30 ft.	10	\$15.08
270538	3"	3.44" – 3.53"	13 psi 30 ft.	10	\$25.48
270548	4"	4.41" – 4.53"	13 psi 30 ft.	10	\$30.14

Clean-Out Gripper® Plugs



Part Number	Description	Usage Range	Maximum Backpressure	Case Quantity	List Price Each
270168	2"	2.20" – 2.5"	17 psi 40 ft.	10	\$22.33
270178	3"	3.23" – 3.5"	17 psi 40 ft.	10	\$24.00
270138	3-1/2"	3.78" – 4.25"	17 psi 40 ft.	10	\$30.14
270188	4"	4.22" – 4.6"	17 psi 40 ft.	10	\$32.94



MECHANICAL PLUGS

T-Handle Gripper® Plugs with Bypass



Part Number	Description	Usage Range	Maximum Backpressure	Case Quantity	List Price Each
272949	6", with 1/4" MNPT Bypass	5.7" – 6.3"	10 psi 23 ft.	1	\$345.71
272957	8", with 3/4" MNPT Bypass	7.7" – 8.3"	10 psi 23 ft.	1	\$431.49
272965	10", with 3/4" MNPT Bypass	9.8" – 10.3"	10 psi 23 ft.	1	\$562.15
272973	12", with 3/4" MNPT Bypass	11.7" – 12.3"	10 psi 23 ft.	1	\$636.07
272981	15", with 3/4" MNPT Bypass	14.8" – 15.3"	10 psi 23 ft.	1	\$861.27
272998	18", with 3/4" MNPT Bypass	17.7" – 18.3"	8.7 psi 20 ft.	1	\$1,172.43

T-Handle Gripper® Plugs without Bypass



Part Number	Description	Usage Range	Maximum Backpressure	Case Quantity	List Price Each
272892	6"	5.7" – 6.3"	10 psi 23 ft.	1	\$287.43
272906	8"	7.7" – 8.3"	10 psi 23 ft.	1	\$359.29
272914	10"	9.8" – 10.3"	10 psi 23 ft.	1	\$519.17
272922	12"	11.7" – 12.3"	10 psi 23 ft.	1	\$562.15
272930	15"	14.8" – 15.3"	10 psi 23 ft.	1	\$775.32
272888	18"	17.7" – 18.3"	8.7 psi 20 ft.	1	\$1,089.91

Iron Grip Plugs



Part Number	Description	Usage Range	Maximum Backpressure	Case Quantity	List Price Each
268028	2" Iron Grip Bypass Plug	1.94" – 2.12"	13 psi	1	\$31.06
268038	3" Iron Grip Bypass Plug	2.82" – 3.12"	11 psi	1	\$40.64
268048	4" Iron Grip Bypass Plug	3.60" – 4.06"	8.7 psi	1	\$50.39
268068	6" Iron Grip Bypass Plug	5.57" – 6.12"	4.3 psi	1	\$89.05
268088	8" Iron Grip Bypass Plug	7.72" – 8.20"	4.3 psi	1	\$186.01
268108	10" Iron Grip Bypass Plug	9.80" – 10.2"	3.5 psi	1	\$281.76
268128	12" Iron Grip Bypass Plug	11.56" – 12.2"	2.6 psi	1	\$519.17

Econ-O-Grip® Plugs



Part Number	Description	Usage Range	Maximum Backpressure	Case Quantity	List Price Each
271519	1-1/2"	1.44" – 1.65"	2 psi 5 ft.	10	\$5.04
271527	2"	1.96" – 2.25"	2 psi 5 ft.	10	\$5.45
271535	3"	2.86" – 3.25"	2 psi 5 ft.	10	\$8.53
271543	4"	3.78" – 4.50"	2 psi 5 ft.	10	\$10.68
271551	5"	4.62" – 5.30"	1 psi 2 ft.	5	\$19.93
271578	6"	5.62" – 6.40"	1 psi 2 ft.	5	\$22.83

Petro Econ-O-Grip® Plugs



Part Number	Description	Usage Range	Maximum Backpressure	Case Quantity	List Price Each
273318	1-1/2"	1.44" – 1.65"	2 psi 5 ft.	1	\$23.81
273328	2"	1.96" – 2.25"	2 psi 5 ft.	1	\$26.05
273338	3"	2.86" – 3.25"	2 psi 5 ft.	1	\$41.86
273348	4"	3.78" – 4.50"	2 psi 5 ft.	1	\$52.09
273358	5"	4.62" – 5.30"	1 psi 2 ft.	1	\$82.60
273368	6"	5.62" – 6.40"	1 psi 2 ft.	1	\$91.53



MECHANICAL PLUGS

Sure-Grip® Plugs (Sch. 40 and Sch. 80)



Part Number	Description	Usage Range	Maximum Backpressure	Case Quantity	List Price Each
271158	1-1/2"	1.48" – 1.63"	22 psi 50 ft.	10	\$8.18
271208	2"	1.89" – 2.09"	22 psi 50 ft.	10	\$8.92
271308	3"	2.89" – 3.09"	13 psi 30 ft.	10	\$11.54
271408	4"	3.87" – 4.09"	13 psi 30 ft.	10	\$18.41

Sure-Grip® Plugs (Sch. 40)



Part Number	Description	Usage Range	Maximum Backpressure	Case Quantity	List Price Each
271228	2"	1.89" – 2.09"	22 psi 50 ft.	10	\$8.66
271338	3"	2.89" – 3.09"	13 psi 30 ft.	10	\$11.19
271448	4"	3.87" – 4.09"	13 psi 30 ft.	10	\$17.88

Kwik 'N Sure® Plugs



Part Number	Description	Usage Range	Maximum Backpressure	Case Quantity	List Price Each
269832	0.39"	0.38" – 0.43"	185 psi 428 ft.	10	\$9.71
269840	0.5"	0.5" – 0.56"	180 psi 415 ft.	10	\$9.71
269867	0.75"	0.72" – 0.87"	180 psi 415 ft.	10	\$9.71
269875	1"	0.86" – 1.02"	40 psi 92 ft.	10	\$9.83
269883	1.25"	1.24" – 1.43"	112 psi 258 ft.	10	\$12.72
269891	1.5"	1.43" – 1.53"	88 psi 203 ft.	10	\$15.22
269905	2"	1.73" – 2.06"	112 psi 258 ft.	5	\$22.14
269913	2.5"	2.3" – 2.78"	72 psi 166 ft.	5	\$30.69
269921	3"	2.73" – 3.20"	28 psi 65 ft.	5	\$35.72
269948	4"	3.72" – 4.50"	24 psi 55 ft.	5	\$55.99
269956	5"	4.80" – 5.19"	8 psi 18 ft.	5	\$76.26

Monitor Well Plugs



Part Number	Description	Usage Range	Maximum Backpressure	Case Quantity	List Price Each
271648	1" – 1.25"	1.00" – 1.38"	6.5 psi 15 ft.	12	\$41.54
271675	2"	1.90" – 2.31"	6.5 psi 15 ft.	50	\$46.78
271669	3"	2.80" – 3.10"	6.5 psi 15 ft.	75	\$51.13
271683	4"	3.80" – 4.38"	6.5 psi 15 ft.	25	\$54.36
271691	6"	5.77" – 6.08"	6.5 psi 15 ft.	10	\$139.42
271735	8"	7.76" – 8.03"	6.5 psi 15 ft.	8	\$238.44
112941	Padlock			1	\$12.26
002608	2" Monitor Well Plug Latch			1	\$6.30
002618	3" & 4" Monitor Well Plug Latch			1	\$6.30
008188	6" & 8" Monitor Well Plug Latch			1	\$13.46

Test-Kap



Part Number	Description	Maximum Backpressure	Case Quantity	List Price Each
270725	1-1/2"	13 psi 30 ft.	10	\$6.91
270733	2"	13 psi 30 ft.	10	\$7.14
270741	3"	13 psi 30 ft.	10	\$8.99
270768	4"	13 psi 30 ft.	10	\$10.59
270776	5"	13 psi 30 ft.	5	\$29.97
270784	6"	13 psi 30 ft.	5	\$20.86

ALUMINUM DEFLECTION Gauges

SDR 35 Fin Sets and Kits



Part Number	Description	Case Quantity	List Price Each
Complete Kits: SDR-35 Pipe, ASTM D3034			
285005	SDR 35, 5% Deflection, 6", 8" and 10" Fins/Mandrel/Case	1	\$1,202.68
285021	SDR 35, 5% Deflection, 8", 10" and 12" Fins/Mandrel/Case	1	\$1,298.77
285013	SDR 35, 7.5% Deflection, 6", 8" and 10" Fins/Mandrel/Case	1	\$1,202.68
285048	SDR 35, 7.5% Deflection, 8", 10" and 12" Fins/Mandrel/Case	1	\$1,298.77
SDR-35 Pipe Fin Sets: 5% Deflection, 4" – 15" Diameter, ASTM D3034			
285056	SDR 35, 5% Deflection, 4" Fin Set for 10" Mandrel	1	\$274.99
285072	SDR 35, 5% Deflection, 6" Fin Set for 10" Mandrel	1	\$288.25
285080	SDR 35, 5% Deflection, 8" Fin Set for 10" Mandrel	1	\$306.47
285099	SDR 35, 5% Deflection, 10" Fin Set for 10" Mandrel	1	\$381.02
285102	SDR 35, 5% Deflection, 12" Fin Set for 10" Mandrel	1	\$482.07
285110	SDR 35, 5% Deflection, 15" Fin Set for 10" Mandrel	1	\$549.99
SDR-35 Pipe Fin Sets: 7.5% Deflection, 4" – 15", ASTM D3034			
285137	SDR 35, 7.5% Deflection, 4" Fin Set for 10" Mandrel	1	\$274.99
285153	SDR 35, 7.5% Deflection, 6" Fin Set for 10" Mandrel	1	\$288.25
285161	SDR 35, 7.5% Deflection, 8" Fin Set for 10" Mandrel	1	\$306.47
285188	SDR 35, 7.5% Deflection, 10" Fin Set for 10" Mandrel	1	\$381.02
285196	SDR 35, 7.5% Deflection, 12" Fin Set for 10" Mandrel	1	\$482.07
285218	SDR 35, 7.5% Deflection, 15" Fin Set for 10" Mandrel	1	\$549.99

PS 46 Fin Sets (SDR-35 Pipe, 18" – 48" Diameter, ASTM F679)



Part Number	Description	Case Qty.	List Price Each
PS 46 Pipe Fin Sets: 5% Deflection			
285536	PS 46, 5% Deflection, 18" Fin Set for 24" Mandrel	1	\$1,437.92
285544	PS 46, 5% Deflection, 21" Fin Set for 24" Mandrel	1	\$1,578.73
285552	PS 46, 5% Deflection, 24" Fin Set for 24" Mandrel	1	\$1,688.06
285595	PS 46, 5% Deflection, 27" Fin Set for 24" Mandrel	1	\$1,795.74
285748	PS 46, 5% Deflection, 30" Fin Set for 24" Mandrel	1	\$1,881.88
285758	PS 46, 5% Deflection, 36" Fin Set for 24" Mandrel	1	\$1,971.34
285768	PS 46, 5% Deflection, 42" Fin Set for 24" Mandrel	1	\$2,060.80
285788	PS 46, 5% Deflection, 48" Fin Set for 24" Mandrel	1	\$2,150.25
PS 46 Pipe Deflection Gauges: 7.5% Deflection			
285560	PS 46, 7.5% Deflection, 18" Fin Set for 24" Mandrel	1	\$1,437.92
285579	PS 46, 7.5% Deflection, 21" Fin Set for 24" Mandrel	1	\$1,578.73
285587	PS 46, 7.5% Deflection, 24" Fin Set for 24" Mandrel	1	\$1,688.06
285609	PS 46, 7.5% Deflection, 27" Fin Set for 24" Mandrel	1	\$1,795.74
285708	PS 46, 7.5% Deflection, 30" Fin Set for 24" Mandrel	1	\$1,881.88
285718	PS 46, 7.5% Deflection, 36" Fin Set for 24" Mandrel	1	\$1,971.34
285728	PS 46, 7.5% Deflection, 42" Fin Set for 24" Mandrel	1	\$2,060.80
285738	PS 46, 7.5% Deflection, 48" Fin Set for 24" Mandrel	1	\$2,150.25



ALUMINUM DEFLECTION Gauges

SDR 26 Fin Sets and Kits



Part Number	Description	Case Qty.	List Price Each
Complete Kits: SDR-26 Pipe, ASTM D3034			
285688	SDR 26, 5% Deflection, 6", 8" and 10" Fins/Mandrel/Case	1	\$1,202.68
285698	SDR 26, 5% Deflection, 8", 10" and 12" Fins/Mandrel/Case	1	\$1,298.77
285798	SDR 26, 7.5% Deflection, 6", 8" and 10" Fins/Mandrel/Case	1	\$1,202.68
285808	SDR 26, 7.5% Deflection, 8", 10" and 12" Fins/Mandrel/Case	1	\$1,298.77
SDR-26 Pipe Fin Sets: 5% Deflection, 4" - 15" Diameter, ASTM D3034			
285638	SDR 26, 5% Deflection, 6" Fin Set for 10" Mandrel	1	\$288.25
285648	SDR 26, 5% Deflection, 8" Fin Set for 10" Mandrel	1	\$306.47
285658	SDR 26, 5% Deflection, 10" Fin Set for 10" Mandrel	1	\$381.02
285668	SDR 26, 5% Deflection, 12" Fin Set for 10" Mandrel	1	\$482.07
285678	SDR 26, 5% Deflection, 15" Fin Set for 10" Mandrel	1	\$549.99
SDR-26 Pipe Fin Sets: 7.5% Deflection, 4" - 15" Diameter, ASTM D3034			
017378	SDR 26, 7.5% Deflection, 6" Fin Set for 10" Mandrel	1	\$288.25
284658	SDR 26, 7.5% Deflection, 8" Fin Set for 10" Mandrel	1	\$306.47
284668	SDR 26, 7.5% Deflection, 10" Fin Set for 10" Mandrel	1	\$381.02
284678	SDR 26, 7.5% Deflection, 12" Fin Set for 10" Mandrel	1	\$482.07

PS 115 Fin Sets (SDR-26 Pipe, 18" - 48" Diameter, ASTM F679)



Part Number	Description	Case Qty.	List Price Each
PS 115 Fin Sets: 5% Deflection			
284688	PS 115, 5% Deflection, 18" Fin Set for 24" Mandrel	1	\$1,437.92
284698	PS 115, 5% Deflection, 21" Fin Set for 24" Mandrel	1	\$1,578.73
284708	PS 115, 5% Deflection, 24" Fin Set for 24" Mandrel	1	\$1,688.06
284718	PS 115, 5% Deflection, 27" Fin Set for 24" Mandrel	1	\$1,795.74
284728	PS 115, 5% Deflection, 30" Fin Set for 24" Mandrel	1	\$1,881.88
284738	PS 115, 5% Deflection, 36" Fin Set for 24" Mandrel	1	\$2,060.80
284748	PS 115, 5% Deflection, 42" Fin Set for 24" Mandrel	1	\$1,971.34
284758	PS 115, 5% Deflection, 48" Fin Set for 24" Mandrel	1	\$2,150.25
PS 115 Fin Sets: 7.5% Deflection			
284768	PS 115, 7.5% Deflection, 18" Fin Set for 24" Mandrel	1	\$1,437.92
284778	PS 115, 7.5% Deflection, 21" Fin Set for 24" Mandrel	1	\$1,578.73
284788	PS 115, 7.5% Deflection, 24" Fin Set for 24" Mandrel	1	\$1,688.06
284798	PS 115, 7.5% Deflection, 27" Fin Set for 24" Mandrel	1	\$1,795.74
284808	PS 115, 7.5% Deflection, 30" Fin Set for 24" Mandrel	1	\$1,881.88
284818	PS 115, 7.5% Deflection, 36" Fin Set for 24" Mandrel	1	\$1,971.34
284828	PS 115, 7.5% Deflection, 42" Fin Set for 24" Mandrel	1	\$2,060.80
284838	PS 115, 7.5% Deflection, 48" Fin Set for 24" Mandrel	1	\$2,150.25

Custom Fins and Parts



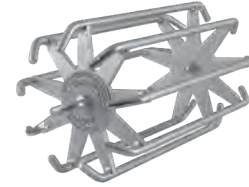
Part Number	Description	Case Quantity	List Price Each
Mandrels			
285617	10" Mandrel for 4" - 15" Fin Sets	1	\$323.04
285250	24" Mandrel for 18" - 48" Fin Sets	1	\$478.75
285488	48" Mandrel for 48" - 60" Fin Sets	1	\$652.70
030268	Deflection Gauge Box	1	\$395.92
Custom Fins			
290138	OD Range 3.50" - 6.50" for 10" Mandrel	1	\$432.37
290148	OD Range 6.51" - 9.50" for 10" Mandrel	1	\$549.99
290158	OD Range 9.51" - 12.50" for 10" Mandrel	1	\$594.72
290168	OD Range 12.51" - 16.49" for 10" Mandrel	1	\$670.92
290078	OD Range 16.50" - 24.00" for 24" Mandrel	1	\$1,807.34
290088	OD Range 24.01" - 30.00" for 24" Mandrel	1	\$2,095.58
290098	OD Range 30.01" - 36.00" for 24" Mandrel	1	\$2,383.83
290108	OD Range 36.01" - 48.00" for 24" Mandrel	1	\$2,650.54
290118	OD Range 48.01" - 54.00" for 48" Mandrel	1	\$2,932.16
290128	OD Range 54.01" - 60.00" for 48" Mandrel	1	\$3,212.12

*Custom Sizes Available: Contact Customer Service.



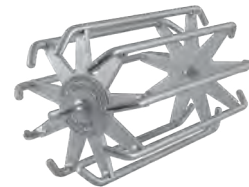
FIXED STEEL DEFLECTION GAUGES

SDR-35 Deflection Gauges, 4" - 15" Diameter, ASTM D3034



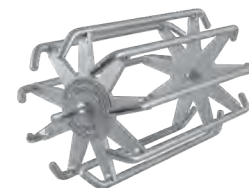
Part Number	Description	Case Quantity	List Price Each
5% Deflection			
286568	SDR 35, 5% Deflection, 6" Gauge	1	\$367.76
286578	SDR 35, 5% Deflection, 8" Gauge	1	\$478.75
286588	SDR 35, 5% Deflection, 10" Gauge	1	\$563.24
286598	SDR 35, 5% Deflection, 12" Gauge	1	\$692.45
286608	SDR 35, 5% Deflection, 15" Gauge	1	\$823.33
7.5% Deflection			
286728	SDR 35, 7.5% Deflection, 6" Gauge	1	\$367.76
286738	SDR 35, 7.5% Deflection, 8" Gauge	1	\$478.75
286748	SDR 35, 7.5% Deflection, 10" Gauge	1	\$563.24
286758	SDR 35, 7.5% Deflection, 12" Gauge	1	\$692.45
286768	SDR 35, 7.5% Deflection, 15" Gauge	1	\$823.33

SDR-26 Deflection Gauges, 4" - 15" Diameter, ASTM D3034



Part Number	Description	Case Quantity	List Price Each
5% Deflection			
286648	SDR 26, 5% Deflection, 6" Gauge	1	\$367.76
286658	SDR 26, 5% Deflection, 8" Gauge	1	\$478.75
286668	SDR 26, 5% Deflection, 10" Gauge	1	\$563.24
286678	SDR 26, 5% Deflection, 12" Gauge	1	\$692.45
286688	SDR 26, 5% Deflection, 15" Gauge	1	\$823.33
7.5% Deflection			
286808	SDR 26, 7.5% Deflection, 6" Gauge	1	\$367.76
286818	SDR 26, 7.5% Deflection, 8" Gauge	1	\$478.75
286828	SDR 26, 7.5% Deflection, 10" Gauge	1	\$563.24
286838	SDR 26, 7.5% Deflection, 12" Gauge	1	\$692.45
286848	SDR 26, 7.5% Deflection, 15" Gauge	1	\$823.33

PS 46 Deflection Gauges, SDR-35 Pipe, 18" - 48" Diameter, ASTM F679

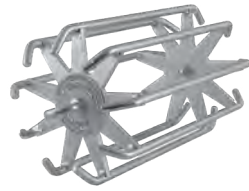


Part Number	Description	Case Quantity	List Price Each
5% Deflection			
286618	PS 46, 5% Deflection, 18" Gauge	1	\$931.00
286628	PS 46, 5% Deflection, 21" Gauge	1	\$1,070.16
286638	PS 46, 5% Deflection, 24" Gauge	1	\$1,210.97
7.5% Deflection			
286778	PS 46, 7.5% Deflection, 18" Gauge	1	\$931.00
286788	PS 46, 7.5% Deflection, 21" Gauge	1	\$1,070.16
286798	PS 46, 7.5% Deflection, 24" Gauge	1	\$1,210.97



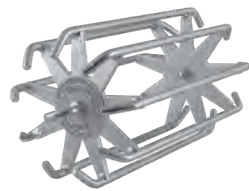
FIXED STEEL DEFLECTION GAUGES

PS 115 Deflection Gauges, SDR-26 Pipe, 18" – 48" Diameter, ASTM F679



Part Number	Description	Case Quantity	List Price Each
5% Deflection			
286698	PS 115, 5% Deflection, 18" Gauge	1	\$931.00
286708	PS 115, 5% Deflection, 21" Gauge	1	\$1,070.16
286718	PS 115, 5% Deflection, 24" Gauge	1	\$1,210.97
7.5% Deflection			
286858	PS 115, 7.5% Deflection, 18" Gauge	1	\$931.00
286868	PS 115, 7.5% Deflection, 21" Gauge	1	\$1,070.16
286878	PS 115, 7.5% Deflection, 24" Gauge	1	\$1,210.97

Custom Fixed Steel Gauges



Part Number	Description	Case Quantity	List Price Each
Custom Fixed Steel			
286308	OD Range 5.19" – 6.49"	1	Call for price
286318	OD Range 6.50" – 8.29"	1	Call for price
286328	OD Range 8.30" – 9.99"	1	Call for price
286338	OD Range 10.00" – 12.55"	1	Call for price
286348	OD Range 12.56" – 15.33"	1	Call for price
286358	OD Range 15.34" – 18.99"	1	Call for price
286368	OD Range 19.00" – 20.99"	1	Call for price
286378	OD Range 21.00" – 23.00"	1	Call for price

*Custom Sizes Available: Contact Customer Service.

Proving Rings for all Deflection Gauges



Part Number	Description	Case Quantity	List Price Each
5% Deflection			
073199	SDR 35, 5% Deflection, 6" Proving Ring	1	\$230.27
073202	SDR 35, 5% Deflection, 8" Proving Ring	1	\$238.55
073210	SDR 35, 5% Deflection, 10" Proving Ring	1	\$256.77
073229	SDR 35, 5% Deflection, 12" Proving Ring	1	\$281.62
073237	SDR 35, 5% Deflection, 15" Proving Ring	1	\$303.16
075868	SDR 35, 5% Deflection, 18" Proving Ring	1	\$323.04
7.5% Deflection			
073253	SDR 35, 7.5% Deflection, 8" Proving Ring	1	\$238.55
073261	SDR 35, 7.5% Deflection, 10" Proving Ring	1	\$256.77
073288	SDR 35, 7.5% Deflection, 12" Proving Ring	1	\$281.62

Custom Proving Rings



Part Number	Description	Case Quantity	List Price Each
Custom Rings			
291068	ID Range 5.00" – 6.00"	1	\$314.75
291088	ID Range 6.01" – 8.00"	1	\$432.37
291108	ID Range 8.01" – 10.00"	1	\$563.24
291128	ID Range 10.01" – 12.00"	1	\$606.31
291158	ID Range 12.01" – 15.00"	1	\$715.65
291188	ID Range 15.01" – 18.00"	1	\$778.60
291218	ID Range 18.01" – 21.00"	1	\$1,103.29
291248	ID Range 21.01" – 24.00"	1	\$1,174.52
292278	ID Range 24.01" – 27.00"	1	\$1,421.35
292308	ID Range 27.01" – 30.00"	1	\$1,631.74

*Custom Sizes Available: Contact Customer Service.



TESTING EQUIPMENT

Line Acceptance and Leak Location Products



Part Number	Description	Case Quantity	List Price Each
253398	Line Acceptance Kit: Air-Loc® Control Panel, 50' Hi-Flow Triple Hose, 30' Poly Lift Line with Gauge, Storage Bin	1	\$3,783.65
304718	Air-Loc® Control Panel	1	\$2,809.57
314718	Air-Loc® Control Panel, Digital Gauges	1	Call for price
026358	0 – 10 psi Test Pressure Gauge w/ Retarded Increments to 30 psi	1	\$198.79
014848	0 – 160 psi, 2" Dial, Compressor Pressure Gauge	1	\$70.41
014828	0 – 60 psi, 2" Dial, Plug Pressure Gauge	1	\$70.41
043048OA	Three Way Valve	1	\$143.30
296643	Regulator	1	\$61.96
057168	Crow's Foot Adapter, 1/4" FPT		Call for price
257108	25' Hi-Flow® Triple Hose: 3/8", 3/4", 3/8"	1	\$780.25
257098	50' Hi-Flow® Triple Hose: 3/8", 3/4", 3/8"	1	\$1,002.24
035268	25' Triple Hose: 3/8", 3/8", 3/8"	1	\$457.22
257038	50' Triple Hose: 3/8", 3/8", 3/8"	1	\$679.20
043338	22' Interconnect Hose: 3/8"	1	\$369.42
257188	400' Triple Hose: 3/8", 3/8", 3/8"	1	Call for price
299510	Replacement Rotary Union	1	\$1,938.21
251534	Rotary Union Replacement Quad Rings	4	\$51.85
055058	0 – 10 psi Test Pressure Retard Gauge – Non Panel Mounted	1	\$110.99
253388	Air-Loc® 400' Triple Hose Reel - Includes 400' Triple Hose	1	\$13,246.08

Conversion Kits for Air Testing (3/8" & 3/4" Hoses)



Part Number	Description	Case Quantity	List Price Each
041748	2" MNPT Plug Kit	1	\$198.79
041758	3" MNPT Plug Kit	1	\$213.70
041768	4" MNPT Plug Kit	1	\$236.89
049108	2" FNPT Cap Kit	1	\$108.84
041778	2-1/2" FNPT Cap Kit	1	\$121.59
041788	4" FNPT Cap Kit	1	\$185.54
041718	6" FNPT Cap Kit	1	\$190.51
041798	3" FNPT Cap Kit	1	\$182.23

Conversion Kits for Air Testing (3/8" Hoses)



Part Number	Description	Case Quantity	List Price Each
028588	3/4" MNPT Plug	1	\$147.93
028598	1-1/2" MNPT Plug	1	\$178.91
028608	2" MNPT Plug	1	\$182.23
028618	3" MNPT Plug	1	\$113.15
028628	4" MNPT Plug	1	\$190.51
049028	2" FNPT Cap	1	\$93.60
028648	2-1/2" FNPT Cap	1	\$108.84
028668	4" FNPT Cap	1	\$165.33
041858	1" FNPT Cap Kit	1	Call for price



TESTING EQUIPMENT

Parts/Fittings



251623



042068



302112



026708

Part Number	Description	Case Quantity	List Price Each
017914	Red Disc Marker	1	\$0.78
017922	Blue Disc Marker	1	\$3.31
017930	Yellow Disc Marker	1	\$0.78
045668	Hi-Flow® Blue Disc Marker	1	\$1.62
028578	3/4" MNPT Plug with 1/4" Taps (2)	1	\$66.10
112690	1-1/2" MNPT Plug with 1/4" Taps (2)	1	\$66.10
300276	2" MNPT Plug with 1/4" Taps (2)	1	\$76.78
078751	3" MNPT ABS Plug with 1/2" and 1/4" Taps (2)	1	\$19.22
112720	4" MNPT Plug with 1/4" Taps (2)	1	\$66.10
019538	2" FNPT Cap with 1/4" Taps (2)	1	\$58.81
065676	2 1/2" FNPT Cap with 1/4" Taps (2)	1	\$52.35
085758	4" FNPT Cap with 1/4" Taps (2)	1	\$83.33
008323	2-1/2" FNPT Cap with 1/4" Tap & 3/4" Tap	1	\$64.77
041838	2-1/2" FNPT Cap with 1/2" Tap & 3/4" Tap	1	\$71.90
041848	4" FNPT Cap with 1/2" Tap & 1/4" Tap	1	\$100.06
041808	2" FNPT Cap with 1/2" Tap & 1/4" Tap	1	\$63.12
251607	1/4" MNPT Brass Plug	50	\$2.15
277037	1/4" MNPT Schrader Tire Valve Inflation Fitting	1	\$10.60
068527	1/8" MNPT Schrader Tire Valve Inflation Fitting	1	\$8.70
071468	1/4" Male Quick Disconnect x 1/8" MNPT	1	\$11.26
003093	1/4" Female Quick Disconnect x 3/8" Hose Barb	1	\$30.98
302112	1/4" Female Quick Disconnect x 1/4" MNPT	1	\$25.35
251623	1/4" Male Quick Disconnect x 1/4" MNPT	1	\$8.61
026708	1/2" Female Quick Disconnect x 1/2" FNPT	1	\$55.50
042068	1/2" Male Quick Disconnect x 1/2" MNPT	1	\$25.35
251666	Swivel Ball - 3/8" F x 3/8" Hose Barb	1	\$7.79
251615	Swivel Ball - 3/8" M x 1/4" MNPT	1	\$6.46
101478	3/4" MNPT x 2" Crows Foot Lug Coupling	1	\$31.97
007518	1/2" MNPT x 2" Crows Foot Lug Coupling	1	\$20.71
041610	3/8" x 16 Eyebolt	1	\$4.31

Manhole Jacks • Rollers • Winch • Manhole Cover Hooks



Part Number	Description	Case Quantity	List Price Each
253318	Manhole Winch with 500' of 3/32" Steel Cable	1	\$3,511.97
056228	Manhole Hose Guide Jack for Pipe 5" - 24"	1	\$1,181.15
056707	Manhole Hose Guide Roller Includes Four 5' Poles	1	\$1,370.00
015443	24" Manhole Cover Hook with 90° Handle	12	\$93.60
015438	36" Manhole Cover Hook with 90° Handle	8	\$100.06
251429	24" Manhole Cover Hook with Flat Handle	12	\$60.96
251438	36" Manhole Cover Hook with Flat Handle	12	\$78.36

Air-Loc® Plate Style Manhole Tester



Part Number	Description	Case Quantity	List Price Each
220328	32" Plate Tester for 18" - 30"	1	\$3,010.02
220388	38" Plate Tester for 18" - 36"	1	\$3,130.95
220448	44" Plate Tester for 18" - 42"	1	\$3,304.89
033018	32" Replacement Pad Kit	1	\$405.86
033028	38" Replacement Pad Kit	1	\$422.43
023748	44" Replacement Pad Kit	1	\$453.91
055348	Replacement 20' Hose and Gauge Assembly	1	\$723.93
304058	Replacement 0 - 30 Hg. Gauge 3.5" Dial Test Pressure Gauge	1	\$240.21

TESTING EQUIPMENT

Air-Loc® Bladder Style Manhole Tester



Part Number	Description	Case Quantity	List Price Each
210248	24" Bladder Tester for 20" - 24.3" Range	1	\$5,142.05
210268	26" Bladder Tester for 21.5" - 26.3" Range	1	\$5,302.74
210298	29" Bladder Tester for 24" - 29.3" Range	1	\$5,375.63
210308	30" Bladder Tester for 25" - 30.3" Range	1	\$5,392.19
210328	32" Bladder Tester for 27.5" - 32.8" Range	1	\$5,804.69
210348	34" Bladder Tester for 29.5" - 34" Range	1	\$5,948.81
210368	36" Bladder Tester for 31.5" - 36" Range	1	\$6,074.71
098485	24" Replacement Bladder	1	\$702.39
008404	26" Replacement Bladder	1	\$723.93
060678	29" Replacement Bladder	1	\$763.69
099406	30" Replacement Bladder	1	\$800.13
063339	32" Replacement Bladder	1	\$998.92
069218OA	34" Replacement Bladder	1	\$864.74
063541	36" Replacement Bladder	1	\$1,083.41
055348	Replacement Vacuum Hose and Gauge Assembly 20 Feet	1	\$723.93
304058	Replacement 0 - 30 Hg. 3.5" Dial Test Pressure Gauge	1	\$240.21
053458	Replacement 0 - 60 psi Gauge 2" Dial	1	\$95.92

Air-Loc® Vacuum Pump



Part Number	Description	Case Quantity	List Price Each
278088	Vacuum Pump: Honda Engine	1	\$6,192.33
278168	Vacuum Pump: Briggs Engine	1	\$5,249.73
045918	Wheel Kit Option	1	\$266.71
019501OA	Replacement Pump Assembly	1	\$2,816.20
015823	Replacement Filter	1	\$28.33
019321	Replacement Pump Vanes (Four Required)	1	\$188.85
107379	Replacement Metal Jar for Line Filter (Metal Jar Only)	1	\$70.41
278098	Vacuum Pump Filter Assembly, Exhaust	1	\$317.40
278108	Vacuum Pump Filter Assembly, Intake	1	\$249.15

Air-Loc® Vacuum Generators



Part Number	Description	Case Quantity	List Price Each
200468	Vacuum Generator 460	1	\$884.62
033868	Replacement Silencer for 460 Generator	1	\$98.07
035248	Replacement Filter for 460 Generator	1	\$37.11
023518	Vacuum Generator 460 Conversion Kit, Hi-Flow Poly Lift Line	1	Call for price
200908	Vacuum Generator 600	1	\$1,565.48
054268	Replacement Silencer for 600 Generator	1	\$283.28
023528	Vacuum Generator 600 Conversion Kit, Hi-Flow Poly Lift Line	1	Call for price

Line Stringer/Ventilators



Part Number	Description	Case Quantity	List Price Each
303318	Line Stringer Kit: Honda Engine, 1000' Nylon Rope Reel, and 6 - 10" Parachute	1	\$4,621.88
301000	Line Stringer Kit: Briggs & Stratton Engine, 1000' Nylon Rope Reel, and 6 - 10" Parachute	1	\$3,725.67
013108	Fan Assembly: Honda Engine	1	\$3,888.01
012100	Fan Assembly: Briggs & Stratton Engine	1	\$3,028.24
014714OA	Replacement Fan: Line Stringer/Ventilator (Right Pitch)	1	\$318.07
300608	Rope Reel with 1000' of 1/8" Nylon Rope	1	\$692.45
066303	4" Parachute	1	\$121.59
015403	6" - 10" Parachute	1	\$147.93
050628	8" - 12" Parachute	1	\$152.41
300594	10" - 18" Parachute	1	\$164.17
006525	18" - 36" Parachute	1	\$265.39
035318	Replacement Foam Pad Kit for Fan	1	\$197.13



TESTING EQUIPMENT

Smoke Blower



Part Number	Description	Case Quantity	List Price Each
303550	Smoke Candle Smoke Blower Kit: Briggs & Stratton Engine	1	\$3,082.91
072608	Smoke Candle: 30 Seconds - 1 Each	1	\$8.61
072618	Smoke Candle: 60 Seconds - 1 Each	1	\$9.77
072628	Smoke Candle: 3 Minutes - 1 Each	1	\$17.39
072638	Smoke Candle: 3 Minutes Double Wick - 1 Each	1	\$18.55
303008	Smoke Fluid Smoke Blower Kit: Briggs & Stratton Engine	1	\$3,296.61
036488	Smoke Fluid Pressure Container and Hose: 2 Gal Capacity	1	\$164.17
065808	Smoke Fluid: One Gallon	4	\$103.42
065818	Smoke Fluid: Five Gallons	1	\$390.99
065828	Smoke Fluid: Fifty-Five Gallon Drum	1	\$3,087.88
014722	Smoke Blower Replacement Fan (Left Pitch)	1	\$318.07
058368	Smoke Candle Holding Cage	1	\$138.66
036498	Smoke Fluid Conversion Kit from Smoke Candle Briggs & Stratton Engine	1	\$720.12
036308	Smoke Fluid Conversion Kit from Smoke Candle Briggs & Stratton Engine - Pre 2017	1	\$733.87

Plumbing Smoke Blower



Part Number	Description	Case Quantity	List Price Each
303078	Plumbing Smoke Blower	1	\$3,860.01
036488	Smoke Fluid Pressure Container and Hose; 2 Gallon Capacity	1	\$164.17
065808	Smoke Fluid: One Gallon	4	\$103.42
065818	Smoke Fluid: Five Gallons	1	\$390.99

Air-Loc® Joint Testers



Part Number	Description	Case Quantity	List Price Each
009028	24" Complete Joint Tester	1	\$8,962.14
009038	27" Complete Joint Tester	1	\$9,310.03
009048	30" Complete Joint Tester	1	\$9,392.86
009058	33" Complete Joint Tester	1	\$9,972.66
009068	36" Complete Joint Tester	1	\$10,254.28
009078	39" Complete Joint Tester	1	\$10,668.43
009088	42" Complete Joint Tester	1	\$11,248.23
009098	48" Complete Joint Tester	1	\$11,877.74
009108	54" Complete Joint Tester	1	\$12,474.11
009118	60" Complete Joint Tester	1	\$13,484.63
009128	66" Complete Joint Tester	1	\$14,097.57
009138	72" Complete Joint Tester	1	\$14,892.73
009158	78" Complete Joint Tester	1	\$15,919.81
009168	84" Complete Joint Tester	1	\$17,725.49
009178	90" Complete Joint Tester	1	\$19,547.74
009188	96" Complete Joint Tester	1	\$20,707.35
009198	102" Complete Joint Tester	1	\$21,535.65

TESTING EQUIPMENT

Air-Loc® Joint Testers



Part Number	Description	Case Quantity	List Price Each
012028	24" Plain Joint Tester	1	\$6,687.65
012038	27" Plain Joint Tester	1	\$6,984.18
012048	30" Plain Joint Tester	1	\$7,149.84
012058	33" Plain Joint Tester	1	\$7,452.99
012066	36" Plain Joint Tester	1	\$7,766.09
012078	39" Plain Joint Tester	1	\$8,054.33
012088	42" Plain Joint Tester	1	\$8,697.09
012098	48" Plain Joint Tester	1	\$9,310.03
012148	54" Plain Joint Tester	1	\$9,790.44
012118	60" Plain Joint Tester	1	\$9,972.66
012128	66" Plain Joint Tester	1	\$11,546.42
012138	72" Plain Joint Tester	1	\$12,126.23
012158	78" Plain Joint Tester	1	\$13,302.40
012168	84" Plain Joint Tester	1	\$14,876.16
012178	90" Plain Joint Tester	1	\$16,433.35
012188	96" Plain Joint Tester	1	\$17,725.49
012198	102" Plain Joint Tester	1	\$19,216.42

End Elements



Part Number	Description	Case Quantity	List Price Each
091456OA	24" End Element	1	\$932.66
063339	30" End Element	1	\$998.92
063347	33" End Element	1	\$1,038.68
063355	36" End Element	1	\$1,058.56
070319	39" End Element	1	\$1,114.88
063363	42" End Element	1	\$1,123.17
063371	48" End Element	1	\$1,156.30
063398	54" End Element	1	\$1,189.43
063401	60" End Element	1	\$1,220.91
063428	66" End Element	1	\$1,244.10
063436	72" End Element	1	\$1,278.89
063444	78" End Element	1	\$1,298.77
063452	84" End Element	1	\$1,345.15
063460	90" End Element	1	\$1,363.37
063479	96" End Element	1	\$1,394.85
063487	102" End Element	1	\$1,429.64

Air-Loc® Joint Tester Replacement Parts



Part Number	Description	Case Quantity	List Price Each
010048	Control Panel - Complete	1	\$2,236.39
026358	0 - 10 psi 4" Dial Test Pressure Gauge with Retarded Increments to 30 psi	1	\$198.79
087602	0 - 60 psi Gauge 4" Dial	1	\$109.17
014838	0 - 100 psi Gauge 2" Dial	1	\$66.10
007892	Three Way Valve	1	\$149.09
296643	Regulator	1	\$61.96
013008	12' Triple Hose: Panel to Tester	1	\$414.15
086363	21" - 36" Wheel Bar Assembly (2 Required)	1	\$982.36
067008	39" - 54" Wheel Bar Assembly (2 Required)	1	\$1,038.68
093661OA	60" - 90" Wheel Bar assembly (2 Required)	1	\$1,046.96
024358	96" and Greater Wheel Bar Assembly (2 Required)	1	\$2,683.67
010628	27" - 54" Frame Gasket	1	\$163.84
010638	60" - 120" Frame Gasket	1	\$200.45



TESTING EQUIPMENT

Multi-Size Point Repair Carrier



Part Number	Description	Case Quantity	List Price Each
4" - 6" Carrier			
279058	4" - 6" Diameter 5' Long	1	\$1,739.42
279108	4" - 6" Diameter 10' Long	1	\$2,516.36
279158	4" - 6" Diameter 15' Long	1	\$3,372.81
8" - 12" Carrier			
287058	8" - 12" Diameter 5' Long 2" MNPT Bypass	1	\$2,274.50
287108	8" - 12" Diameter 10' Long 2" MNPT Bypass	1	\$2,945.41
287158	8" - 12" Diameter 15' Long 2" MNPT Bypass	1	\$3,881.39
12" - 16" Carrier			
288058	12" - 16" Diameter 5' Long 2" MNPT Bypass	1	\$3,427.48
288108	12" - 16" Diameter 10' Long 2" MNPT Bypass	1	\$4,495.98
288158	12" - 16" Diameter 15' Long 2" MNPT Bypass	1	\$5,620.80
18" - 24" Carrier			
289058	18" - 24" Diameter 5' Long 2" MNPT Bypass	1	\$4,704.71
289108	18" - 24" Diameter 10' Long 2" MNPT Bypass	1	\$5,887.51
289158	18" - 24" Diameter 15' Long 2" MNPT Bypass	1	\$7,173.03
24" - 36" Carrier			
284058	24" - 36" Diameter 5' Long 4" MNPT Bypass	1	\$6,424.25
284108	24" - 36" Diameter 10' Long 4" MNPT Bypass	1	\$9,232.17
284158	24" - 36" Diameter 15' Long 4" MNPT Bypass	1	\$10,704.87
Point Repair Cages			
287008	8" - 12" Carrier Cage	1	Call for price
288008	12" - 16" Carrier Cage	1	Call for price
289008	18" - 24" Carrier Cage	1	Call for price
284008	24" - 36" Carrier Cage	1	Call for price

Jet-Ball™



Part Number	Description	Case Quantity	List Price Each
254207	6" - 10"	1	\$414.15
254215	10" - 14"	1	\$541.71
254223	15" - 18"	1	\$652.70



TESTING EQUIPMENT

Aqua-Loc® Hydrostatic Test Pump – Diaphragm Style, 9.5 gpm



Part Number	Description	Case Quantity	List Price Each
278068	Diaphragm Style Test Pump: 9.5 gpm/550 psi Honda Engine with 12' Output & 10' Intake Hoses	1	\$6,377.86
278058	Diaphragm Style Test Pump: 9.5 gpm/550 psi Briggs & Stratton Engine with 12' output & 10' intake Hoses	1	\$5,733.45
039168	Optional 16 gallon Water Tank	1	\$1,038.68
071208	Replacement Cap for Water Tank	1	\$39.43
045918	Optional Wheel Kit	1	\$266.71
031198	Replacement 12' Output Hose Without Disconnects	1	\$274.99
022828	Replacement Disconnect for Output Hose	1	\$145.12
064348	Replacement 0 - 300 psi 2.5" Dial Test Pressure Gauge with Retarded Increments to 600 psi	1	\$112.81
030938	Replacement 12' Bypass/Intake Hose	1	\$328.00
022768	Replacement Strainer with Nylon Filter	1	\$66.10

Aqua-Loc® Hydrostatic Test Pump – Diaphragm Style 35 gpm



Part Number	Description	Case Quantity	List Price Each
278178	Diaphragm Style Test Pump: 35 gpm/290 psi Honda Engine 12' Output & 10' Intake Hoses (Not for sale in CA)	1	\$10,734.69
045918	Optional Wheel Kit	1	\$266.71
047008	Replacement Output Hose with Quick Disconnects	1	\$404.21
052878	Replacement Disconnect for Output	1	\$116.29
064348	Replacement 0 - 300 psi 2.5" Dial Test Pressure Gauge, with Retarded Increments to 600 psi	1	\$112.81
046998	Replacement 12' Dual Input Hose	1	\$621.22
046758	Replacement Strainer with Nylon Filter	1	\$150.58
063098	Gasket Kit for Output & Suction Hose Fittings	1	\$21.54

Test Pumps



Part Number	Description	Case Quantity	List Price Each
273908	Air-Max™ Pro HV Test Pump	1	Call for price
055748	Air-Max™ Pro HV Replacement Hose with Thumb Lock	1	Call for price
273888	Econ-O-Pump® Test Pump	6	\$49.04
273898	Air-Max™ Test Pump	1	Call for price
055738	Air-Max™ Replacement Hose with Thumblock	1	Call for price



TESTING EQUIPMENT

Clog-Busters



Part Number	Description	Case Quantity	List Price Each
303127	1" - 2" Clog-Buster	1	\$15.99
303135	1.5" - 3" Clog-Buster	1	\$17.21
303143	4" - 6" Clog-Buster	1	\$39.14
006193	Faucet Adapter	1	\$1.76

Manometer



Part Number	Description	Case Quantity	List Price Each
010205	Manometer 0" to 16" Water Column	1	\$73.88

HOSE ASSEMBLIES & ACCESSORIES

Waste and Overflow Plugs



Part Number	Description	Case Quantity	List Price Each
012678	Tub Waste & Overflow Plugs	12	\$17.19

Replacement Chains



Part Number	Description	Case Quantity	List Price Each
059708	2" Ring with 12" Chain	1	\$7.29
059718	3" Ring with 12" Chain	1	\$7.29
059728	4" Ring with 12" Chain	1	\$7.29
059748	6" Ring with 12" Chain	1	\$7.29
059758	2" Ring with 24" Chain	1	\$8.78
059768	3" Ring with 24" Chain	1	\$8.78
059778	4" Ring with 24" Chain	1	\$8.78
059798	6" Ring with 24" Chain	1	\$8.78

Gauges with 1/4" Connection



Part Number	Description	Case Quantity	List Price Each
000698	0 - 15 psi Gauge 2" Face 0.1 psi Increments	1	\$17.89
000628	0 - 30 psi Gauge 2" Face 0.5 psi Increments	1	\$15.49
000638	0 - 60 psi Gauge 2" Face 1 psi Increments	1	\$15.49
000648	0 - 100 psi Gauge 2" Face 2 psi Increments	1	\$15.24

HOSE ASSEMBLIES & ACCESSORIES

Gauges with 3/4" FNPT Test Body



Part Number	Description	Case Quantity	List Price Each
024568	0 - 15 psi Gauge 2" Face 0.1 psi Increments	1	\$23.03
019698	0 - 30 psi Gauge 2" Face 0.5 psi Increments	1	\$23.03
019708	0 - 60 psi Gauge 2" Face 1 psi Increments	1	\$23.03
019718	0 - 100 psi Gauge 2" Face 2 psi Increments	1	\$23.03
000658	Hex Test Body 1/8" Tap	1	\$21.20

Extension Hose with Gauge, 3/16" ID



Part Number	Description	Case Quantity	List Price Each
274218	5' Hose with Gauge 3/16" ID	1	\$69.91
274228	10' Hose with Gauge 3/16" ID	1	\$99.23
274238	20' Hose with Gauge 3/16" ID	1	\$112.65
274248	30' Hose with Gauge 3/16" ID	1	\$129.05
274268	50' Hose with Gauge 3/16" ID	1	\$193.82
274298	100' Hose with Gauge 3/16" ID	1	\$349.54

Extension Hose - 3/16" ID



Part Number	Description	Case Quantity	List Price Each
274011	2' Hose, 3/16" ID	6	\$17.19
274038	3' Hose, 3/16" ID	6	\$19.55
274008	2' Hose, 3/16" ID Bagged Bulk Pak	24	\$14.91
274018	3' Hose, 3/16" ID Bagged Bulk Pak	24	\$17.19
274054	5' Hose, 3/16" ID	6	\$27.83
274100	10' Hose, 3/16" ID	1	\$35.45
274208	20' Hose, 3/16" ID	1	\$68.58
274308	30' Extension, 3/16" ID	1	\$102.05
274508	50' Extension, 3/16" ID	1	\$165.66
274998	100' Extension, 3/16" ID	1	\$321.38
055816	Deflator with Clamp (Female Replacement End)	1	\$8.70
055808	Inflator with Clamp (Male Replacement End)	1	\$8.70
277048	Replacement O-Rings, 10 Pack	1	\$10.60

Poly Lift Line - 3/16" ID



Part Number	Description	Case Quantity	List Price Each
261076	10' Hose with Poly Lift Line, 3/16" ID	1	\$134.52
261084	20' Hose with Poly Lift Line, 3/16" ID	1	\$172.29
261106	30' Hose with Poly Lift Line, 3/16" ID	1	\$228.61
261114	40' Hose with Poly Lift Line, 3/16" ID	1	\$256.77



HOSE ASSEMBLIES & ACCESSORIES

Hi-Flow Poly Lift Line with Gauge – 3/8" ID



Part Number	Description	Case Quantity	List Price Each
380108	3/8" 10' Rope Hose w/o Gauge	1	\$278.31
380208	3/8" 20' Rope Hose w/o Gauge	1	\$341.26
380308	3/8" 30' Rope Hose w/o Gauge	1	\$402.55
380408	3/8" 40' Rope Hose w/o Gauge	1	\$465.50
380508	3/8" 50' Rope Hose w/o Gauge	1	\$513.54
383108	3/8" 10' Rope Hose with Gauge	1	\$357.82
383208	3/8" 20' Rope Hose with Gauge	1	\$420.77
383308	3/8" 30' Rope Hose with Gauge	1	\$483.72
383408	3/8" 40' Rope Hose with Gauge	1	\$546.67
383508	3/8" 50' Rope Hose with Gauge	1	\$609.62
048468	Replacement 0 – 60 psi, 2.5" Dial, Plug Pressure Gauge with Retarded Increments to 160 psi with Cover	1	\$156.05
053458	Replacement 0 – 60 psi, 2.5" Dial, Plug Pressure Gauge with Retarded Increments to 160 psi	1	\$95.92
029598	Cover, Gauge Protector	1	\$6.46



test with the best™

Minneapolis, MN 55436
800.843.7584 | Fax: 800.843.7585

Oatey.com/Cherne

Kevin Barrington

email: kbarrington@oatey.ca

Mobile 416.801.4772

LCS1056D 3/22

Cherne Industries, Inc.

2300 Vierling Drive West
Shakopee, MN 55379
Ph: (800) 843-7584
Ph: (952) 933-5501

Cleveland Distribution

4565 Industrial Parkway
Cleveland, OH 44135
Ph: (800) 203-1155
Ph: (216) 267-7100 press 4

Oatey SCS - Arlington

2800 Rental Car Drive
Irving, TX 75062
Ph: (817) 274-9225

Oatey SCS- Omaha

4334 S. 67th Street
Omaha, NE 68117
Ph: (402) 331-1175

Oatey SCS - Las Vegas

5245 N. Sloan Lane - Suite 130
North Las Vegas, NV 89115
Ph: (702) 337-2604

Find us on    

©2022 Cherne Industries, Inc. All Rights Reserved. This information is based on data believed to be reliable but Cherne makes no warranties, express or implied, as to its accuracy and assumes no liability arising out of its use. The data listed falls within the normal range of product properties but should not be used to establish specification limits or used alone as the basis of design. Cherne's liability to purchasers is expressly limited to its terms and conditions of sale, available at www.oatey.com/legal/toiv.pdf. Cherne is a trademark of Oatey Co. All other trademarks can be found on Oatey.com.